

# LXI980+DSE6020 installation configuration instructions



LXI980 Data collector



DSE6020 generator controller

## 一、LXI980+DSE6020 software configuration

### 1.1 LXI980 Product accessories



LXI980 data collector



USB cable



The LINK line



GPS positioning line



Mobile antenna



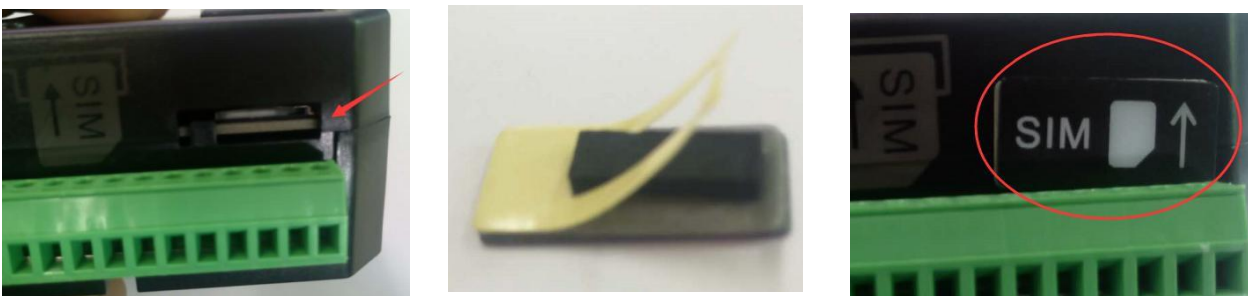
SIM card slot

## 1.2 A SIM card installed

Install the SIM card to the card slot on the collector, then reload the back cover. (pictured below)



1、Load the SIM into the slot and the metal face down 2、Insert the collector card slot, metal face down, small triangle toward the outside



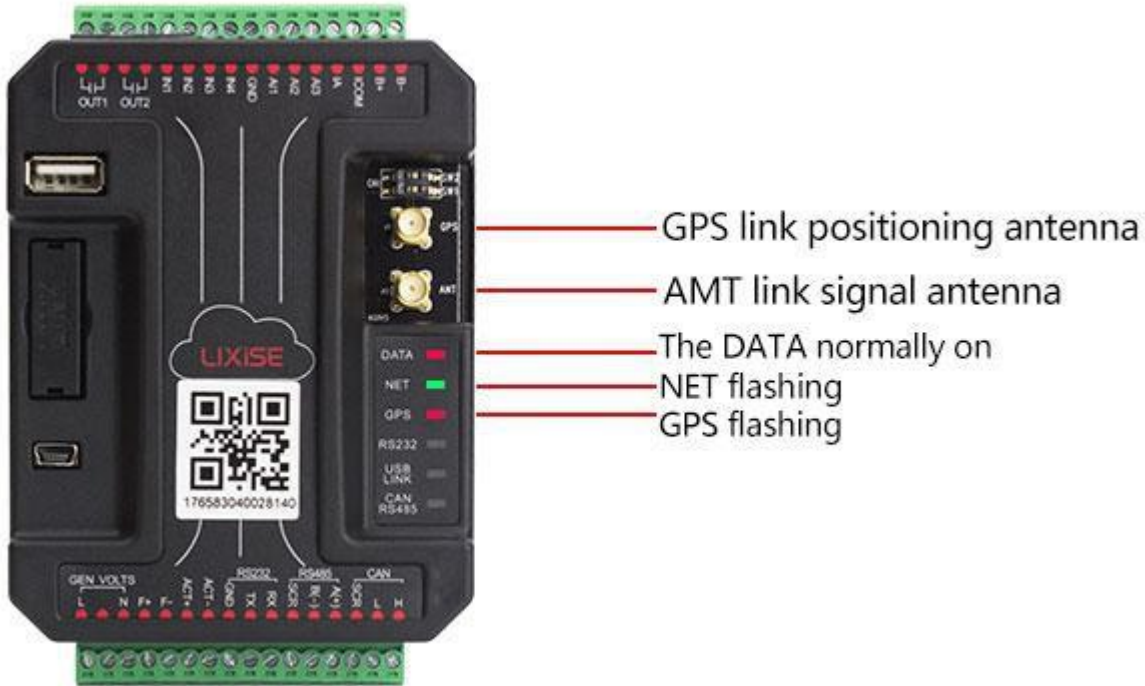
3、 After loading the card, attach the SIM card seal and complete the SIM card installation

## 1.3 Power selection system connection

Prepare 8-32vdc power supply, and connect to B+ & B- of LXI980. At this time, DATA red indicator is always bright, NET green indicator and GPS red indicator is blinking.

The NET indicator light (green) is also flashing, indicating that the device is trying to connect to the mobile network;

The GPS indicator light (green) is also flashing, indicating that the device is connecting with GPS.

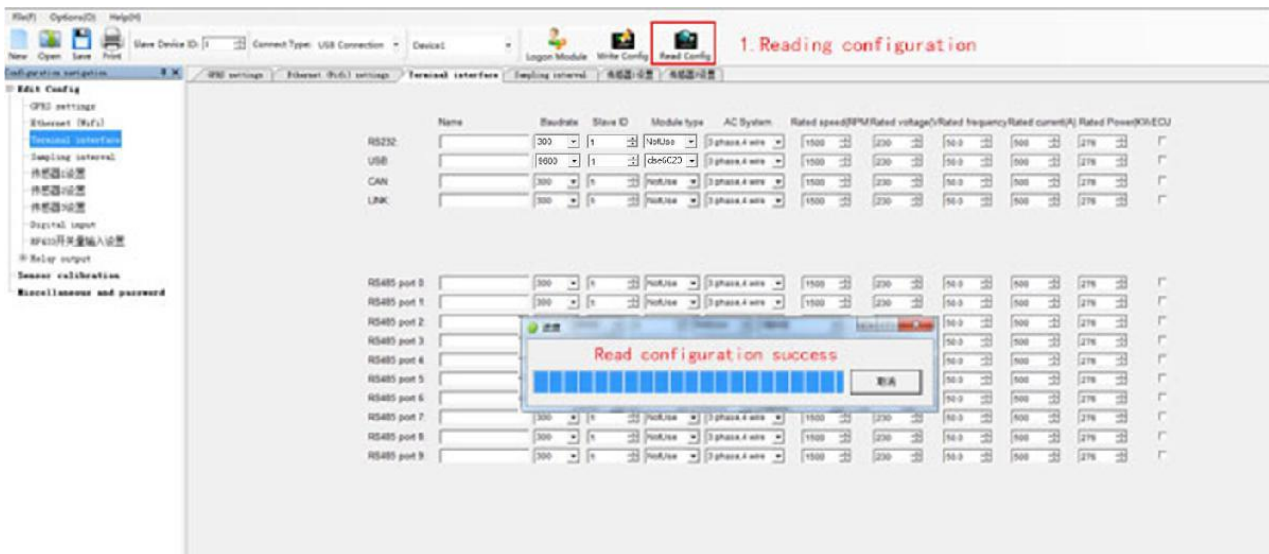


After about 15-30 seconds, the NET green indicator should be on, indicating that the device has successfully connected to the local mobile network. If it keeps flashing, then replace SIM of different mobile company to ensure that the NET indicator is always bright;

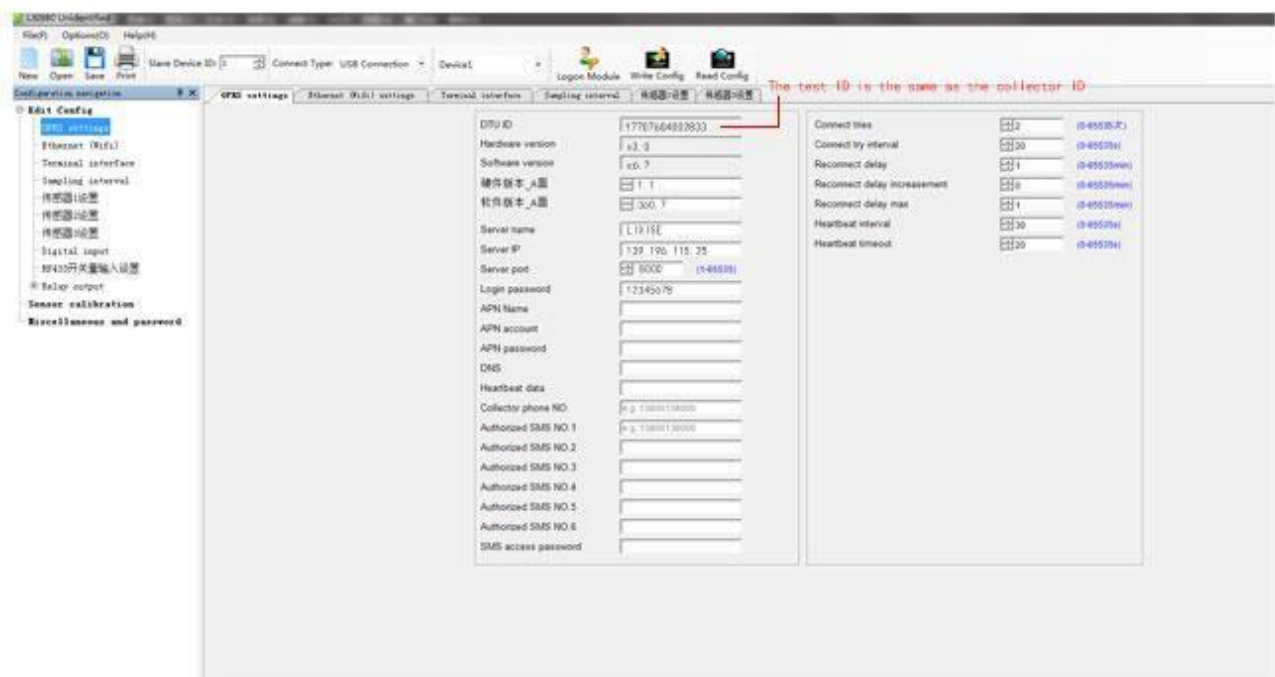


## 1.4 LXI980 Device configuration

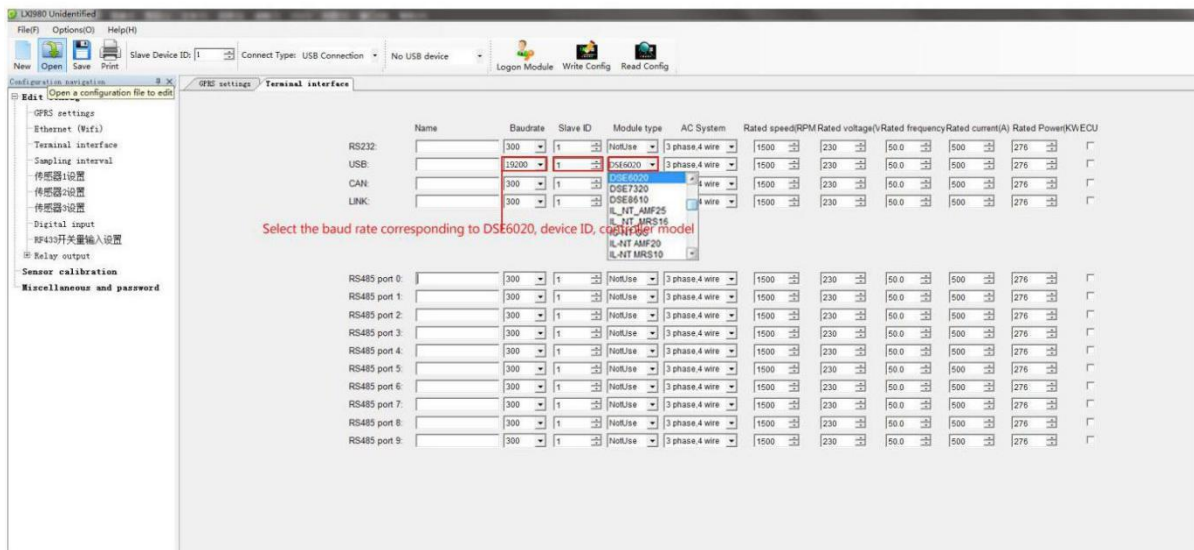
- 1) ) Using PC computer, download the LXI980 Wireless Data Transfer Unit software from the [www.lixise.com/index.html](http://www.lixise.com/index.html) , and install it;
- 2) Connect the device to the PC USB port by the Micro USB cable attached to the device, and then open the configuration software of LXI980 to read the configuration of the current device;



- 3) Open the device interface menu, and check that the ID is consistent with the LXI980 collector ID whether or not.

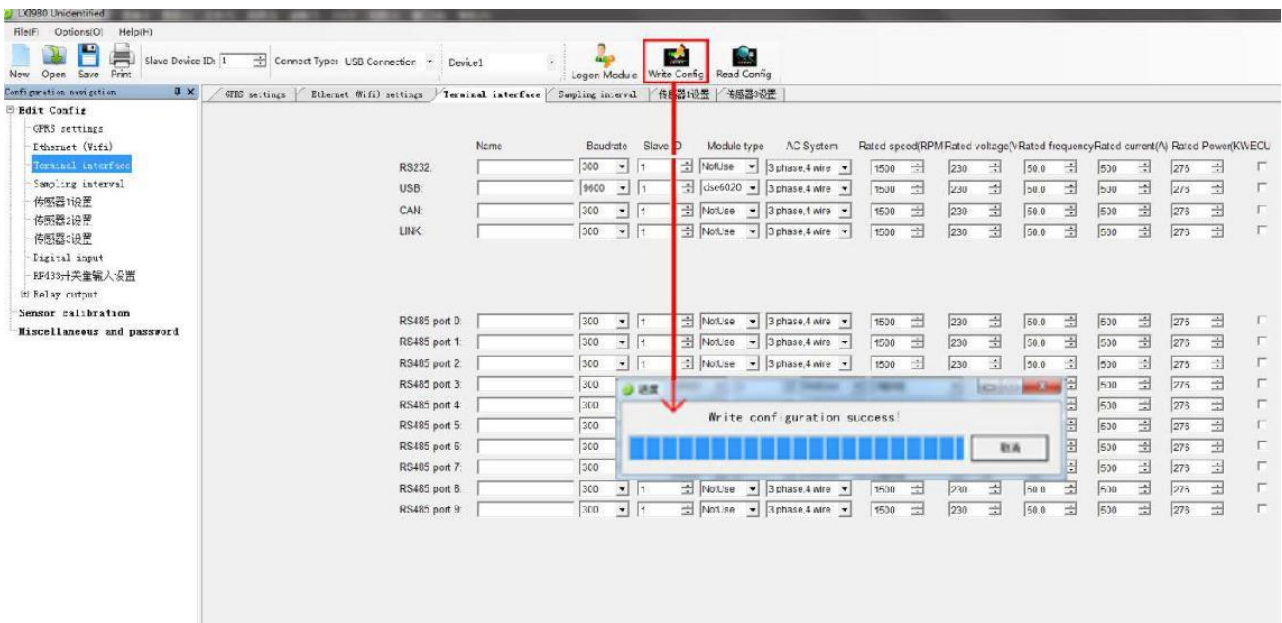
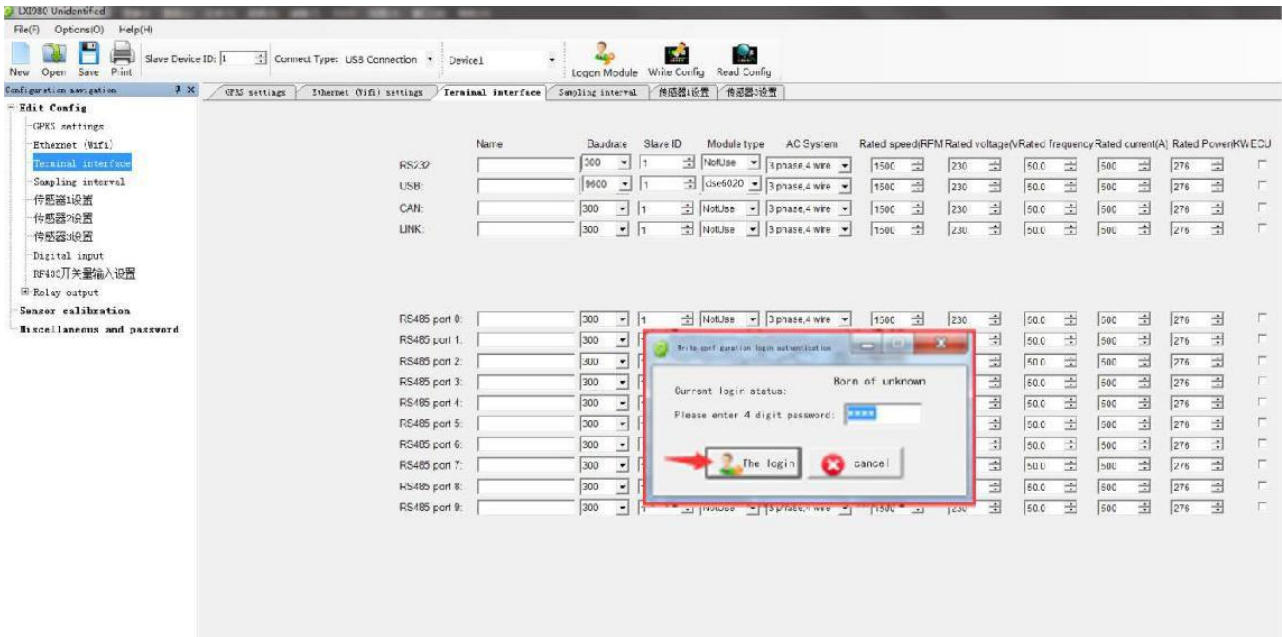


4) Open the device interface menu and select the corresponding options according to the type and port of the controller that needs to be connected, as well as the baud rate and the communication address. Select DSE6020, baud rate: 9600, device ID: 1 (baud rate can refer to the attachment. Different companies may not be the same)



Dongguan Tuancheng Automation Equipment Co.,LTD.

5) Then click on the menu bar to write the configuration, and complete.



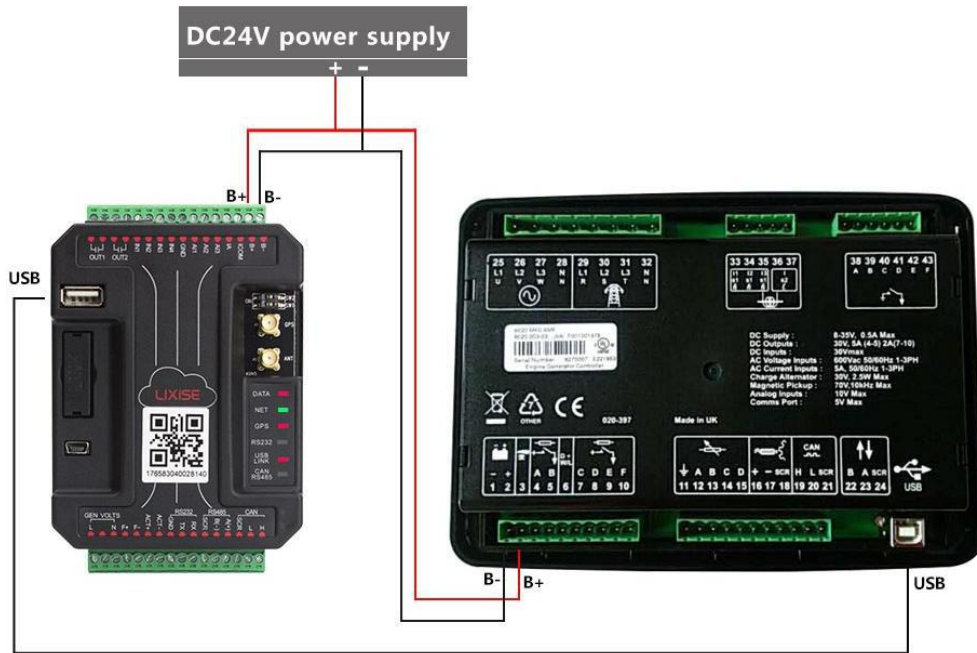
The configuration of LXI980 has been completed

## 二、 LXI980+DSE6020 installation wiring

### 2.1 wiring

Connect the B +, b-positive and negative poles of LXI980 and DSE6020 with the 8-32vdc power supply, and connect the USB ports of the two products with three

wires, and pay attention to the corresponding connection.

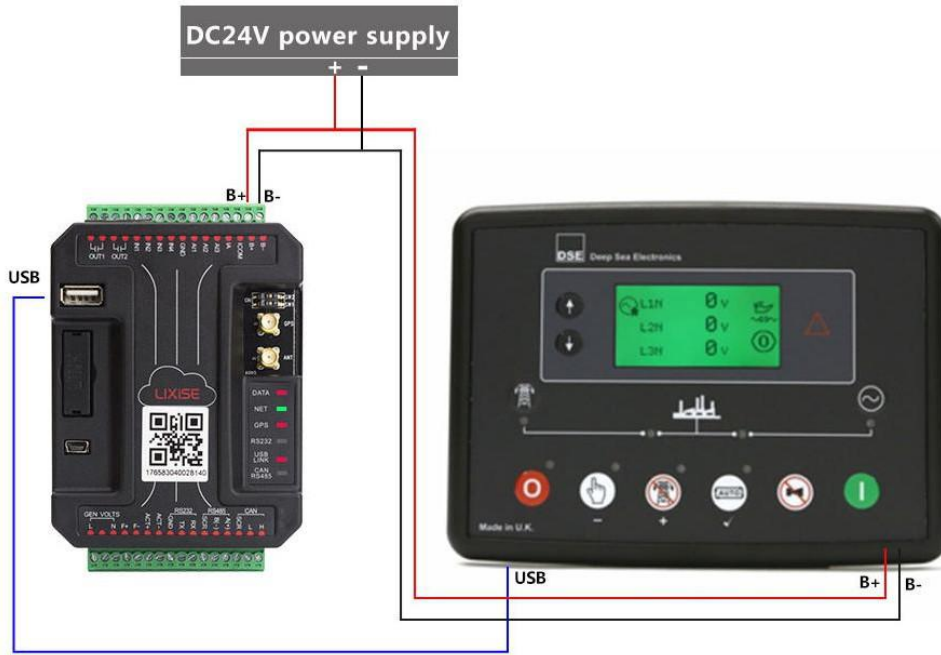


## 2.2 electric inspection

electric inspection:

- DATA is always bright,means power is on.
- NET is flashing,indicates that the network is being connected.
- GPS standing bright, indicates successful positioning;
- USB doesn't bright,it means the connection failed, and the normal bright indicates that the connection is normal;

When NET and USB are always bright, means the wiring installation is correct and can add the genset in the platform.



Note 1: the controller models currently supported are attached to table 1;

Note 2: you must select the same baud rate and communication address as the controller, as well as the port type to ensure the normal communication with the controller

### ≡、 Add the genset from the platform

#### 3.1 registered account and add genset

When NET indicator and controller connection indicator are always on, open the browser and enter the cloud platform address: [www.i6yun.com](http://www.i6yun.com)





Register a account in the i6 cloud platform, then add a genset from the monitoring genset list, input the ID number of the equipment to the connector serial number column , and select the right collector channel (controller connection communication port), save and return to the genset list.

### 3.2 test of starting the genset

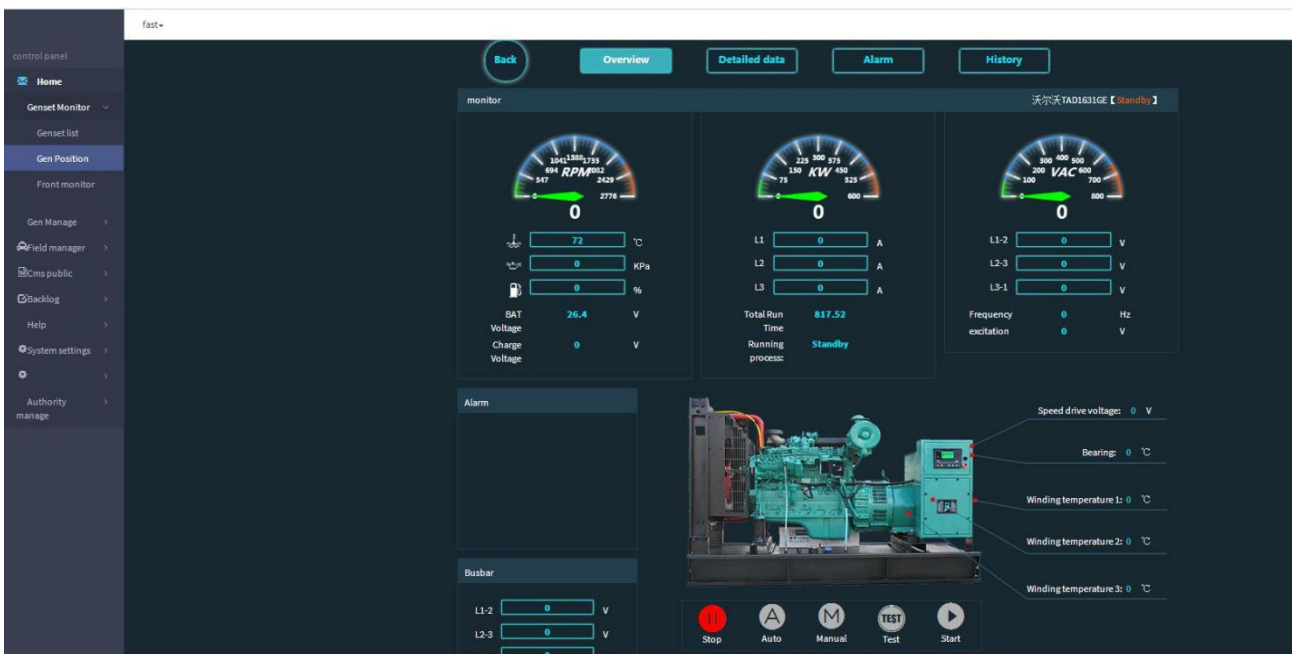
#### 3.2.1 check the genset in the list whether online. If online, click the real-time

Dongguan Tuancheng Automation Equipment Co.,LTD.

monitoring icon in the genset list to check the real-time monitoring data of the genset;

3.2.2 if not online, check whether the IP address and port number are correct in the GPRS menu of LXI980, and check if the serial number and channel selection of the collector monitor are correct.

GENSET NO	GENSET NAME	SAMPLE SN	ENGINE MODEL	GENERATOR MODEL	ONLINE STATE	ACTION
兴通机电2号机	兴通机电2号机	17646040027410			standby	
电发115	电发115	175637040028052			Offline	
上海250KW南京中文06	上海250KW南京中文06	177664040028155		恒通JAV12	Offline	
171109	50G	178481040028176		恒通JAV12	Offline	
卡特448KW南京八卦洲07	卡特448KW南京八卦洲07	179709040028156		恒通JAV12	Offline	
WH300-1001	扬州华翔	176954040028151		恒通JAV12	Offline	
上海227	上海227	177378040028240		恒通JAV12	Offline	
澜泽发电康明斯150KW 001	澜泽发电康明斯150KW 001	178379040028154		恒通JAV12	Offline	
澜泽发电康明斯150KW 002	澜泽发电康明斯150KW 002	176592040028153		恒通JAV12	Offline	
176505040028023	田城测试4G	176505040028023		恒通JAV12	Offline	



**All the best and good luck!**